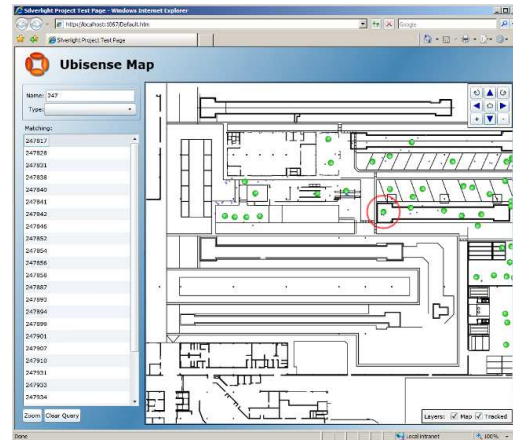


Real-Time Location Information on your Intranet

Ubisense Real-Time Location Systems allow the precise tracking of any item within your organization. This data can be integrated into your business processes to improve efficiency and reduce costs. The Ubisense Enterprise Browser enables the information that is being generated to be viewed from any networked computer in your organization without complex installation and maintenance, delivering the data in real-time across the enterprise.

The solution is fully customizable to provide simple, easy-to-navigate user interfaces that deliver real-time tracking information to users across your organization. The Ubisense Enterprise Browser adopts Microsoft standards and is easily maintained and upgraded by IT organizations.



Features

- Track and view object locations in real time.
- Search for objects by name and/or type. Use wildcards to locate groups of objects.
- Display found objects in a list. Selected results are indicated on the map using a pulsing "radar" indicator.
- Select objects in the list and zoom to their location.
- Pan, zoom, and rotate the map view.
- Hover over object to dynamically show name.
- Customize map styles at design time, including colours, icons, representations of objects and map lines.
- Javascript enables for easy web page integration.
- Standard data transport: based on "SOAP", and will traverse firewalls that allow http.
- Supports multiple connected clients from a single web server.
- Can scale up to thousands of simultaneous clients using Ubisense Location Platform to share data between web servers.

Requirements

- IIS 5.1 or 6.0 (7.0 scheduled for release) on server, running ASP.NET 3.5.
- Silverlight 2.0 plug-in installed on client browser. Currently supported under IE6, IE7, IE8, Firefox 2, Firefox 3, Safari (including MacOs running on Intel processors), and many other browsers. Deployable through WSUS, or individually with administrator rights.
- Licensing is based on concurrent user access.

Enterprise Solutions

Ubisense Consulting Group specializes in adapting Ubisense and Microsoft technology to meet the requirements of our customers. The Ubisense Enterprise Browser out of the box allows easy searching and viewing of Real-Time data which has great value to an organization. The Ubisense Consulting Group can then quickly extend that to deliver:

- Custom reports based on your requirements.
- Integration to enterprise systems such as ERP, MES and Automated Dispatching.
- Messaging solutions which deliver alerts via Email, SMS or Pagers.
- Historical reporting and trend analysis

About Ubisense

Ubisense is the world leader in Precise Real Time Location Systems, tracking unlimited numbers of people and objects in any space of any size. With unmatched 15cm 3D tracking accuracy and high reliability, its acclaimed open standards technology platform gives enterprises the power to bring visibility and control to previously intractable business processes. Together Ubisense consulting and its partners, such as IBM, Atlas Copco, Lockheed Martin and Raytheon deliver geospatial and RTLS systems, pioneering innovation whilst reducing costs, gaining competitive advantage and improving safety for companies across all vertical markets. With over 400 customers worldwide including BMW, Caterpillar, DHL, Duke Energy, Deutsche Telekom, US Army; Ubisense is revolutionising industries today. Visit www.ubisense.net

For further information please contact: enquiries@ubisense.net

Worldwide offices

Ubisense U.K. & Ireland

St Andrews House
90 St Andrews Road
Cambridge CB4 1DL, UK
Tel: +44 (0) 1223 535 170

Ubisense Asia Pacific

1 Fullerton Road
02-01 One Fullerton
Singapore 049213
Tel: +65 6472 0186

Ubisense Australia

Level Twelve 200 Queen Street
Melbourne VIC 3000
Australia
Tel: +613 8681 0400

Ubisense Europe

ADAC Haus, Freie-Vogel-Str. 393
44269 Dortmund, Germany
Tel: +49 (0) 231 999 55 500

Ubisense Korea

Youngdong Tower #902
300-4, Sungsu-Dong 2-GA
Sungdong-Gu
Seoul, 133-120
Korea
Tel: +82 2 529 1472

Ubisense New Zealand

Level 3, 10 O'Connell St
PO Box 6714 Wellesley St
Auckland 1010
New Zealand
Tel: +64 9 304 1048

Ubisense Americas

5445 DTC Parkway, Suite 1110
Denver, CO 80111, USA
Tel: +1 (720) 249 4149

Ubisense reserves the right to change technical specifications without prior notice.
For the most up to date version of this Data sheet please see www.ubisense.net/en/resources